

## Benefits

- Ideal for smart buildings; integrates with building and home automation systems.
- Certified for Smoke & Heat Extraction (SHE).

## Applications

E-LOCK is a linear drive designed to secure window hardware in combination with the Nano, Vega or Quasar chain actuators.

E-LOCK can be integrated into the window profile or surface mounted on the profile (E-Lock with Bracket)

## E-Lock Lock Features

- Stainless steel case
- Provided with an emergency unlocking mechanism
- Different strokes and directions can be selected by dip-switches
- Available on request E-LOCK F-SIGNAL version that provides lock/unlock feedback signal
- Two E-LOCK drives can be used (F-SIGNAL version) on one window: contact AFI for more information)

## E-LOCK Series

Part #	Description	Stroke	Force (Push/Pull)
<b>41835UUL</b>	E-Lock UL Listed	19 / 38mm	600N/600N
<b>41835UUL</b>	E-Lock (no bracket) UL Listed	19 / 38mm	600N/600N

## Accessories

Part #	Description
<b>42138L</b>	Long Fork Kit - For installation of E-Lock outside the frame of the window.
<b>41596Q</b>	Emergency unlocking tool



Top

Bottom



Emergency unlocking tool



Long Fork Kit shown

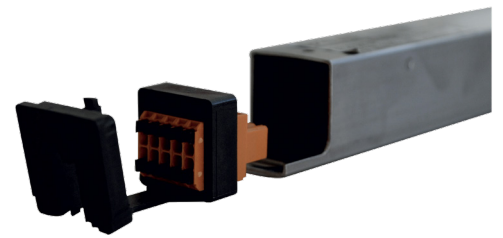
### Specifications

<b>Supply voltage</b>	24VDC (-15% / +50%)
<b>Nom. Current draw</b>	Approx 0.3A at 600N load
<b>Limit stop</b>	Yes
<b>Stroke (approx)</b>	19 to 38mm (¾" to 1½"), adjustable
<b>Push/Pull force (Max)</b>	600N (135 lbf +/- 3%), adjustable
<b>Speed</b>	1.6mm/sec
<b>Dimensions</b>	498 x 25x 25mm (19⅝" x 1" x 1")
<b>Ambient Oper Temp</b>	-10 °C to +60 °C (14 °F to 140 °F)
<b>Listing</b>	UL Recognized
<b>Protection class</b>	IP20
<b>Case</b>	SST

Discuss with AFI Sales & Support for your specific project/profile.

### Connection Pinout

- 1 Feed/Command
- 2 Feed/Command
- 3 Feed/Command
- 4 Feed/Command
- 5 Microswitch (if installed)
- 6 Microswitch (if installed)
- 7 E-Lock feedback signal / error
- 8 E-Lock feedback signal / error
- 9 E-Lock feedback signal / error
- 10 Not used



Electrical connection port shown

### Dimensions

